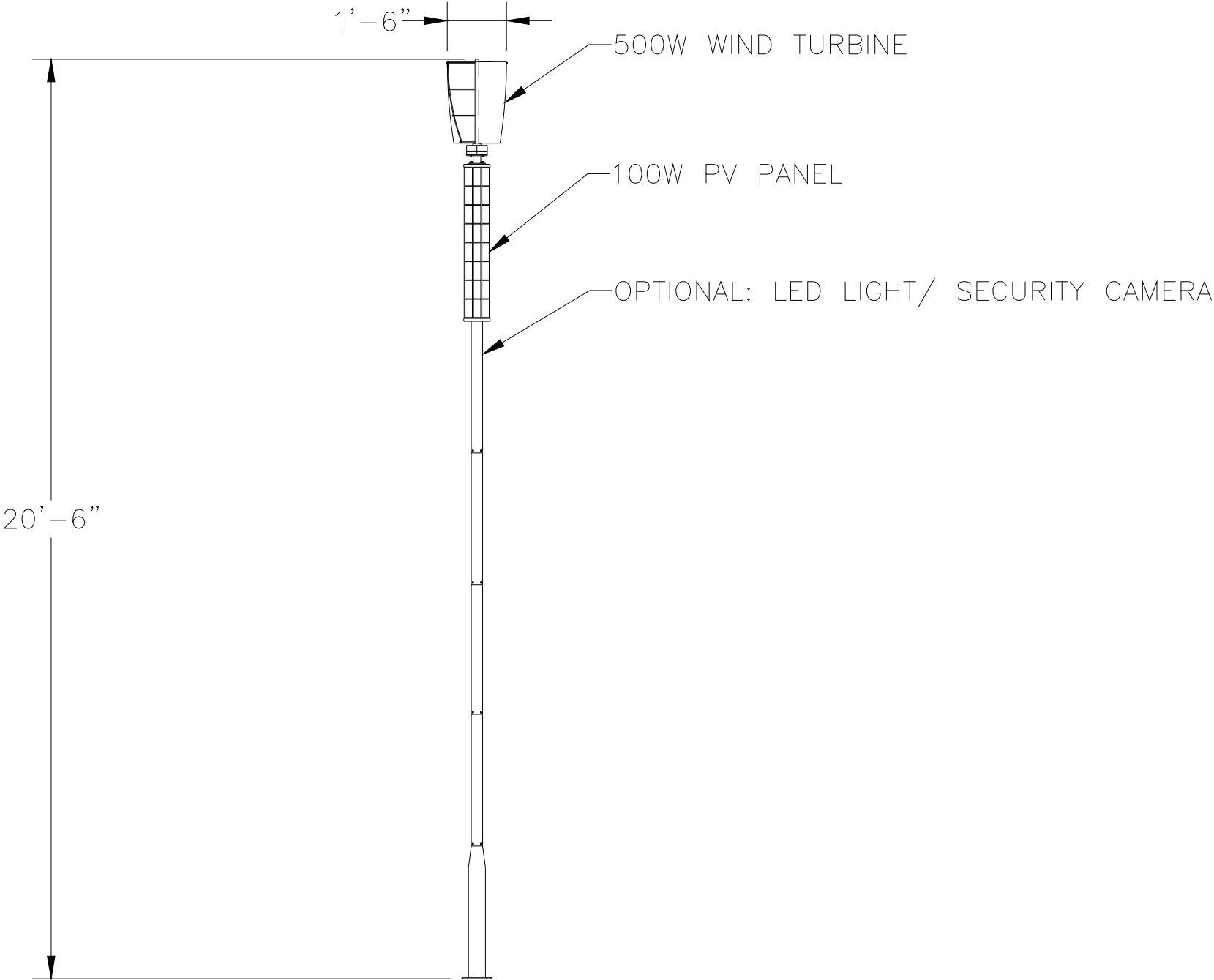


C:\Users\josua\AppData\Local\Temp\AcPublish\_46408\UA\_Master\_6-10-25.dwg



**SAFETY ALERT:**  
PIPELINES AND APPURTENANCES CONSTRUCTED IN THE VICINITY OF OVERHEAD POWER LINES CAN EXPERIENCE UNSAFE ELECTRICAL VOLTAGES AND POTENTIALLY LETHAL SHOCK HAZARDS WHILE THIS EQUIPMENT IS BEING HANDLED ABOVEGROUND AND UPON PLACEMENT IN THE PIPE TRENCH. CONTRACTOR IS RESPONSIBLE FOR ALL PERSONNEL AND EQUIPMENT SAFETY DURING THE COURSE OF CONSTRUCTION INCLUDING BUT NOT LIMITED TO AWARENESS TRAINING, ALL SAFETY PRECAUTIONS AND INTERIM ELECTRICAL GROUNDING.

REVISIONS						
	△					
	△					
	△					
	△					
NO.	DATE		DESCRIPTION		REV.	CHK. APP.

NOTICE:  
THIS DOCUMENT IS THE PROPERTY OF CORROSION INTEGRITY LLC. NEITHER THIS DOCUMENT NOR ANY DATA OR INFORMATION HEREIN SHALL BE COPIED OR REPRODUCED IN ANY MANNER, LOANED OR OTHERWISE DISPOSED OF, OR USED FOR ANY PURPOSE WHATSOEVER, WITHOUT THE PRIOR WRITTEN PERMISSION OF CORROSION INTEGRITY LLC. IF THIS DOCUMENT IS LOANED BY OR WITH THE AUTHORITY OF CORROSION INTEGRITY LLC, THE BORROWER, IN CONSIDERATION OF SUCH LOAN, AGREES TO THE FORGOING CONDITIONS BY OTHER THAN THE INTENDED USER.

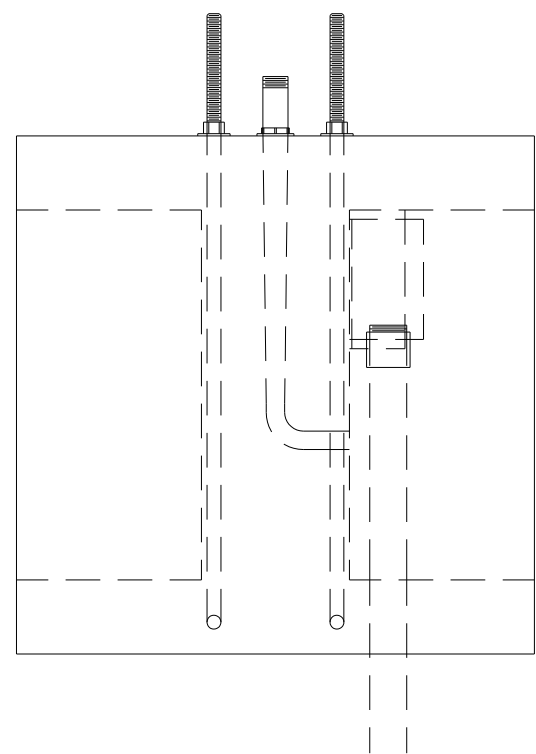
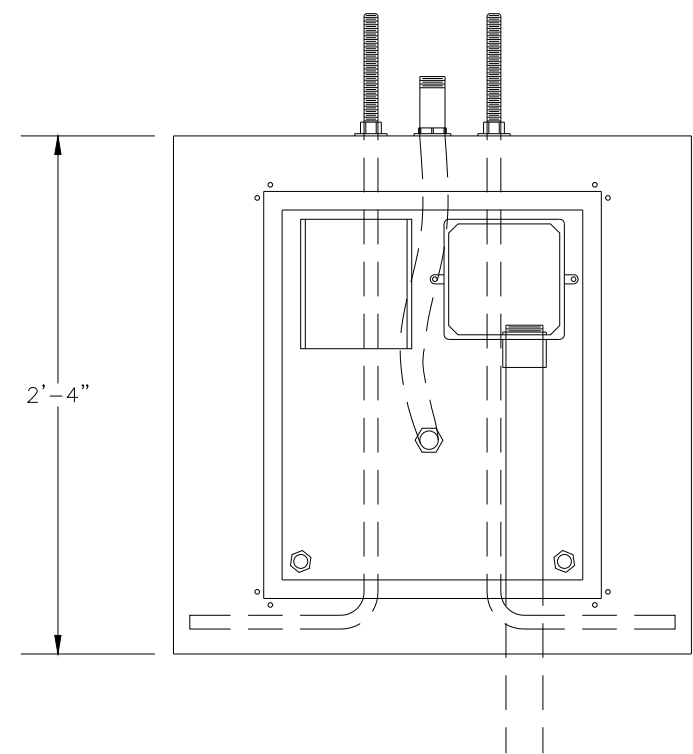
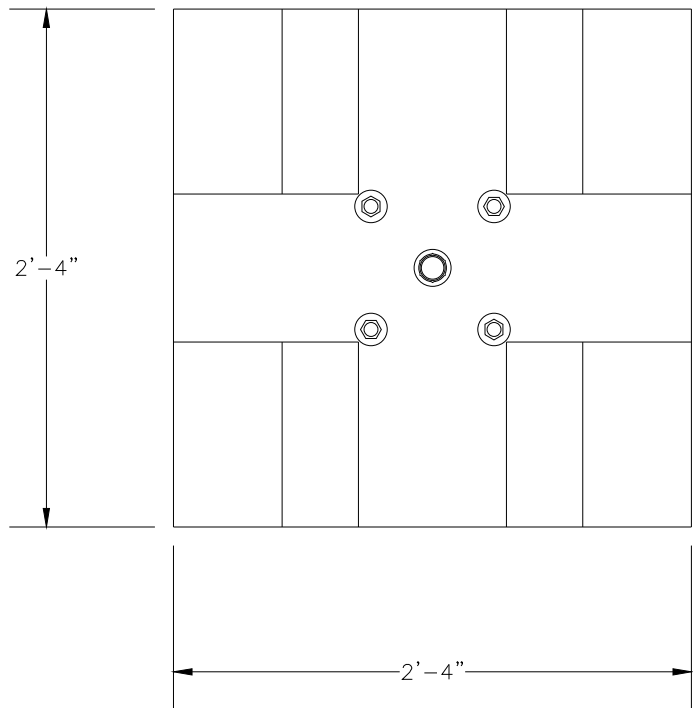


DRAWN BY	JA
DESIGNED BY	AL
DATE	6/23/2025
SCALE	1" = 3'
JOB NO.	NA
DWG. NO.	01

DC - DC CURRENT CONTROLLER POLE

SOLAR / WIND  
20'-6" TALL, Ø18"

C:\Users\josua\AppData\Local\Temp\AcPublish\_46408\UA\_Master\_6-10-25.dwg



SAFETY ALERT:

PIPELINES AND APPURTENANCES CONSTRUCTED IN THE VICINITY OF OVERHEAD POWER LINES CAN EXPERIENCE UNSAFE ELECTRICAL VOLTAGES AND POTENTIALLY LETHAL SHOCK HAZARDS WHILE THIS EQUIPMENT IS BEING HANDLED ABOVEGROUND AND UPON PLACEMENT IN THE PIPE TRENCH. CONTRACTOR IS RESPONSIBLE FOR ALL PERSONNEL AND EQUIPMENT SAFETY DURING THE COURSE OF CONSTRUCTION INCLUDING BUT NOT LIMITED TO AWARENESS TRAINING, ALL SAFETY PRECAUTIONS AND INTERIM ELECTRICAL GROUNDING.

REVISIONS						
	△					
	△					
	△					
	△					
NO.	DATE		DESCRIPTION			REV. CHK. APP.

NOTICE:  
THIS DOCUMENT IS THE PROPERTY OF CORROSION INTEGRITY LLC. NEITHER THIS DOCUMENT NOR ANY DATA OR INFORMATION HEREIN SHALL BE COPIED OR REPRODUCED IN ANY MANNER, LOANED OR OTHERWISE DISPOSED OF, OR USED FOR ANY PURPOSE WHATSOEVER, WITHOUT THE PRIOR WRITTEN PERMISSION OF CORROSION INTEGRITY LLC. IF THIS DOCUMENT IS LOANED BY OR WITH THE AUTHORITY OF CORROSION INTEGRITY LLC, THE BORROWER, IN CONSIDERATION OF SUCH LOAN, AGREES TO THE FORGOING CONDITIONS BY OTHER THAN THE INTENDED USER.



DRAWN BY	JA
DESIGNED BY	AL
DATE	6/23/2025
SCALE	1:10
JOB NO.	NA
DWG. NO.	02

POLE BASE	
CONCRETE FILLED 28"X28"X28"	